

ds30 Studio free edition manual



1. Table of contents

ds30 Studio free edition manual.....	1
1. Table of contents.....	2
2. Introduction.....	5
2.1. ds30 Loader.....	5
2.2. ds30 Studio free edition.....	5
2.3. Prerequisites and Requirements.....	5
2.4. Trademarks.....	5
3. Getting started.....	6
3.1. Requirements.....	6
3.2. Installation.....	6
3.3. Starting.....	6
3.3.1. Windows.....	6
3.3.2. Linux.....	6
3.3.3. macOS.....	6
3.4. First start.....	7
4. Window elements.....	8
4.1. Menu items.....	8
4.1.1. File\Exit.....	8
4.1.2. Operations\Debug mode.....	8
4.1.3. Operations\Reload hex file.....	8
4.1.4. Operations\Boot loading\Abort.....	8
4.1.5. Operations\Boot loading\Check for boot loader.....	8
4.1.6. Operations\Boot loading\Write.....	8
4.1.7. Operations\Boot loading\Read.....	8
4.1.8. Operations\Boot loading\Create console command.....	8
4.1.9. Operations\Encryption\Encrypt.....	9
4.1.10. Operations\Encryption\Create console command.....	9
4.1.11. Operations\Merger\Merge.....	9
4.1.12. Operations\Merger\Create console command.....	9
4.1.13. Operations\Rectifier\Rectify.....	9
4.1.14. Operations\Rectifier\Create console command.....	9
4.1.15. View\Always on top.....	9
4.1.16. View\Settings directory.....	9
4.1.17. View\Advanced mode.....	9
4.1.18. Help\About.....	9
4.2. Operations toolbar.....	9
4.3. Projects toolbar.....	9
4.3.1. List.....	9
4.3.2. New button.....	10
4.3.3. Duplicate button.....	10
4.3.4. Delete button.....	10
4.4. Project tab.....	10

4.4.1. Project name.....	10
4.4.2. Device.....	10
4.4.3. Application, input hex file.....	10
4.5. Communication tab.....	10
4.5.1. Port.....	10
4.5.2. ...-button.....	10
4.5.3. Baud/bit rate.....	10
4.5.4. Flow Control.....	10
4.5.5. Parity.....	11
4.5.6. Two stop bits.....	11
4.5.7. Echo verification.....	11
4.5.8. One way communication.....	11
4.5.9. Send auto baud rate sync character.....	11
4.5.10. Manual reset.....	11
4.5.11. Reset by command.....	11
4.5.12. Reset time.....	11
4.5.13. Reset baud/bit rate.....	11
4.5.14. Reset by RTS.....	11
4.5.15. Reset by DTR.....	11
4.5.16. Manual activation.....	11
4.5.17. Activation by RTS.....	11
4.5.18. Activation by DTR.....	12
4.6. Boot loader tab.....	12
4.6.1. Flash, write destination.....	12
4.6.2. EEPROM, write destination.....	12
4.6.3. Configuration bits, write destination.....	12
4.6.4. Flash, read source.....	12
4.6.5. EEPROM, read source.....	12
4.6.6. Hello timeout.....	12
4.6.7. Poll time.....	12
4.6.8. Timeout.....	12
4.6.9. Delay after port open.....	12
4.6.10. Don't relocate application reset vector.....	12
4.6.11. Don't point reset vector to boot loader.....	12
4.6.12. Don't write empty pages.....	12
4.6.13. Put checksum before application vector.....	13
4.6.14. Allow overwrite of boot loader.....	13
4.6.15. Custom boot loader.....	13
4.6.16. Hello character.....	13
4.6.17. Placement, size.....	13
4.7. Terminal tab.....	13
4.7.1. Baud/bit rate.....	13
4.7.2. RTS.....	13
4.7.3. DTR.....	13
4.7.4. DSR.....	13

4.7.5. CTS.....	13
4.7.6. Open.....	13
4.7.7. Close.....	13
4.7.8. Tx text.....	13
4.7.9. Tx hex.....	13
4.7.10. \r \n \0.....	14
4.7.11. Send.....	14
4.7.12. Rx type selection.....	14
4.7.13. Clear Rx.....	14
4.7.14. Switch to after write.....	14
4.7.15. Clear rx on open.....	14
4.7.16. Counters.....	14
4.8. Info tab.....	14
4.8.1. Device.....	14
4.8.2. Application hex file.....	14
4.8.3. Boot loader.....	14
4.9. Output text boxes.....	14
4.9.1. Initialization.....	14
4.9.2. Parse.....	15
4.9.3. Operations.....	15
4.9.4. Terminal.....	15
4.10. Graphical hex-file representation.....	15
5. Boot loading.....	16
5.1. Console.....	16
5.2. Usage syntax.....	16
5.3. Options summary.....	16
5.4. Return value.....	18
5.4.1. Windows.....	19
5.4.2. Linux / macOS.....	19
6. Appendix A – Links.....	20

2. Introduction

2.1. ds30 Loader

ds30 Loader is a boot loader supporting PIC12, PIC16, PIC18, PIC24, dsPIC families of MCUs from Microchip.

2.2. ds30 Studio free edition

ds30 Studio free edition is a PC application with functionality related to ds30 Loader boot loader firmwares. It consists of a graphical application and a console/terminal application. The graphical application works only on Windows. The console application also works in Linux and macOS.

2.3. Prerequisites and Requirements

.NET framework 3.5 (Windows) or Mono (Linux and macOS).

2.4. Trademarks

All rights to copyrights, registered trademarks, and trademarks reside with their respective owners.

3. Getting started

3.1. Requirements

ds30 Studio requires a .NET framework to run. For Windows there are two different frameworks available; .NET framework from Microsoft and Mono from Xamarin. For Linux and macOS, only Mono is available. Mono is constantly being developed and bug fixed. It is recommended to use the latest version. Download links are available in appendix A.

Running ds30 Loader Studio on Linux and macOS is not supported. It may or it may not work.

3.2. Installation

The ds30 Studio does not need to be installed.

3.3. Starting

3.3.1. Windows

- Double click ds30Studio.exe from Explorer
- or use run on the start menu, browse to ds30Studio.exe
- or start from command prompt

3.3.2. Linux

Run command: `mono ds30StudioConsole.exe`

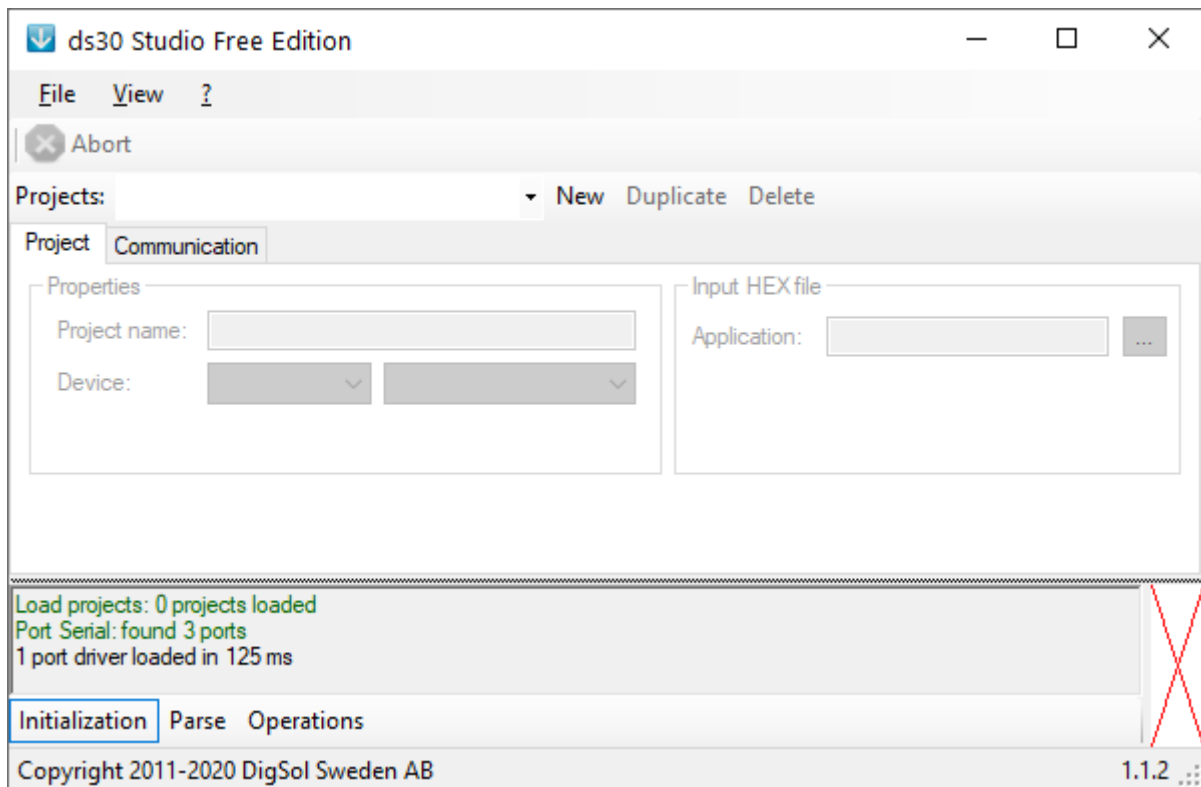
3.3.3. macOS

Run command: `mono ds30StudioConsole.exe`

3.4. First start

When started the first time it will look something like the screenshot below, depending on the operating system version and configuration.

If you are an experienced boot loader user you will probably want to switch to advanced mode on the menu View\Advanced mode. This will enable more settings and features.



4. Window elements

The ds30 Studio consists of six parts; the menu, the operations toolbar, the project toolbar, the tab pages, the output text boxes and the graphical hex file representation.

4.1. Menu items

4.1.1. File\Exit

Saves all settings and closes the application.

4.1.2. Operations\Debug mode

When debug mode is enabled, additional information is output during most operations. This option is typically used when for troubleshooting. When toggled, the hex-file is re-parsed.

4.1.3. Operations\Reload hex file

Reloads the application hex file. The application hex file is also automatically reloaded when ds30 Studio receives focus and the application hex file time stamp has changed.

4.1.4. Operations\Boot loading\Abort

Aborts the current write, read, or check for boot loader operation.

4.1.5. Operations\Boot loading\Check for boot loader

Sends the hello command to the boot loader and displays firmware and device information if it is received properly.

4.1.6. Operations\Boot loading\Write

Initiates a write operation based on the selection in the write destinations under the boot loader tab.

If poll time is set to lower than 100ms, the applications process priority is raised to above normal. The priority is restored after write.

If “Switch to after write” is checked in the terminal tab, the terminal tab is shown after a successful write and the port is opened.

4.1.7. Operations\Boot loading\Read

Initiates a read operation based on the selection in the write destinations under the boot loader tab. When the read has successfully completed the user is asked for a filename to store the read data in.

4.1.8. Operations\Boot loading\Create console command

Creates a command string that can be used with ds30 Loader console. The command is output in the operations text box and copied to the clipboard.

4.1.9. Operations\Encryption\Encrypt

Encrypts the application hex file using the encryption settings in the encryption tab.

4.1.10. Operations\Encryption\Create console command

Creates a command string that can be used with ds31 Encryptor console. The command is output in the operations text box and copied to the clipboard.

4.1.11. Operations\Merger\Merge

Merges the application and boot loader hex files into a single hex file using the settings in the merging tab.

4.1.12. Operations\Merger\Create console command

Creates a command string that can be used with ds32 HEX Merger console. The command is output in the operations text box and copied to the clipboard.

4.1.13. Operations\Rectifier\Rectify

Merges the application and boot loader hex files into a single hex file using the settings in the merging tab.

4.1.14. Operations\Rectifier\Create console command

Creates a command string that can be used with ds33 HEX Rectifier console. The command is output in the operations text box and copied to the clipboard.

4.1.15. View\Always on top

When checked, the window stays on top of other windows even when not active.

4.1.16. View\Settings directory

Opens the directory where the setting files are stored.

4.1.17. View\Advanced mode

When enabled all available options are made visible.

4.1.18. Help\About...

Opens the about window.

4.2. Operations toolbar

The toolbar buttons have the same function as the menu items with the same name.

4.3. Projects toolbar

4.3.1. List

A list of all projects. Projects are automatically save on exit and read on start-up. Each project is stored as a separate XML file in the settings directory.

4.3.2. New button

Creates a new empty project with default settings. Projects can also be created by dragging on or more hex files onto ds30 Studio.

4.3.3. Duplicate button

Creates a copy of the selected project.

4.3.4. Delete button

Deletes the selected project. Projects can also be deleted manually by deleting the project XML files in the settings directory, this must be done while ds30 Studio is not running or the project files will be recreated when ds30 Studio exits..

4.4. Project tab

4.4.1. Project name

The project name is set by the user and is not tied to any functionality.

4.4.2. Device

The chosen device and family are used to parse hex files correctly. When device or family is changed, the hex-file is re parsed. Available devices depends on the license.

4.4.3. Application, input hex file

This is the file that is to be written.

4.5. Communication tab

4.5.1. Port

Port used to communicate with the boot loader. If the desired serial port is not available in the drop down list it is possible to manually type in the port name.

4.5.2. ...-button

When pressed a configuration window is opened for the selected port. Not all ports have a configuration window.

4.5.3. Baud/bit rate

If the desired rate isn't available, it may be possible to specify a custom rate depending on which port type is selected. See the ds30 Loader main manual for additional information.

4.5.4. Flow Control

This setting is specific to serial ports. See the ds30 Loader main manual for more information.

4.5.5. Parity

This setting is specific to serial ports. See the ds30 Loader main manual for more information.

4.5.6. Two stop bits

This setting is specific to serial ports. See the ds30 Loader main manual for more information.

4.5.7. Echo verification

See the ds30 Loader main manual.

4.5.8. One way communication

See the ds30 Loader main manual.

4.5.9. Send auto baud rate sync character

This setting is specific to serial ports. See the ds30 Loader main manual.

4.5.10. Manual reset

When checked, the user is responsible to make the boot loader running on the target unit.

4.5.11. Reset by command

See the ds30 Loader main manual.

4.5.12. Reset time

See the ds30 Loader main manual.

4.5.13. Reset baud/bit rate

See the ds30 Loader main manual.

4.5.14. Reset by RTS

This setting is specific to serial ports. See the ds30 Loader main manual for more information.

4.5.15. Reset by DTR

This setting is specific to serial ports. See the ds30 Loader main manual for more information.

4.5.16. Manual activation

This setting is specific to serial ports. When checked, the user is responsible to power and get the target unit out of reset state.

4.5.17. Activation by RTS

This setting is specific to serial ports. See the ds30 Loader main manual for more information.

4.5.18. Activation by DTR

This setting is specific to serial ports. See the ds30 Loader main manual for more information.

4.6. Boot loader tab

4.6.1. Flash, write destination

See the ds30 Loader main manual.

4.6.2. EEPROM, write destination

This option is disabled if the application hex file does not contain any EEPROM data. See the ds30 Loader main manual for more information.

4.6.3. Configuration bits, write destination

This option is disabled if the application hex file does not contain any configuration bits. See the ds30 Loader main manual for more information.

4.6.4. Flash, read source

When checked, the flash memory is read during a read operation.

4.6.5. EEPROM, read source

When checked, the EEPROM memory is read during a read operation.

4.6.6. Hello timeout

See the ds30 Loader main manual.

4.6.7. Poll time

See the ds30 Loader main manual.

4.6.8. Timeout

See the ds30 Loader main manual.

4.6.9. Delay after port open

See the ds30 Loader main manual.

4.6.10. Don't relocate application reset vector

See the ds30 Loader main manual.

4.6.11. Don't point reset vector to boot loader

See the ds30 Loader main manual.

4.6.12. Don't write empty pages

See the ds30 Loader main manual.

4.6.13. Put checksum before application vector

See the ds30 Loader main manual.

4.6.14. Allow overwrite of boot loader

See the ds30 Loader main manual.

4.6.15. Custom boot loader

See the ds30 Loader main manual.

4.6.16. Hello character

See the ds30 Loader main manual.

4.6.17. Placement, size

See the ds30 Loader main manual.

4.7. Terminal tab

4.7.1. Baud/bit rate

The baud rate used to communicate.

4.7.2. RTS

When checked the RTS pin is activated. This option is only enabled for serial ports.

4.7.3. DTR

When checked the RTS pin is activated. This option is only enabled for serial ports.

4.7.4. DSR

When checked the RTS pin is activated. This option is only enabled for serial ports.

4.7.5. CTS

When checked the RTS pin is activated. This option is only enabled for serial ports.

4.7.6. Open

Opens the port specified on the basic page.

4.7.7. Close

Closes the port.

4.7.8. Tx text

The text in the text box is treated as a string.

4.7.9. Tx hex

The text in the text box is parsed, it can contain 8-bit hex values and/or strings. The format of the data is hexval1;'string';"string"....

Example hex only: 0;11;f;ab;3e

Example strings only: 'Hello';"Reset"

Example mixed: "Reset";d

4.7.10. \r \n \0

When checked return feed, newline, and null character respectively are appended to the string. Only for text transmission.

4.7.11. Send

Transmits data according to the tx settings.

4.7.12. Rx type selection

4.7.13. Clear Rx

Clears the receive text box.

4.7.14. Switch to after write

When checked, the terminal page is showed and the port is opened after a successful write operation.

4.7.15. Clear rx on open

When checked, the rx textbox is cleared when the open is opened.

4.7.16. Counters

Shows number of transmission, number of transmitted bytes and number of received bytes. The reset button clears all the counters. All counters are automatically cleared then the port is opened.

4.8. Info tab

4.8.1. Device

Shows some basic information about the selected device. The config count is not always accurate.

4.8.2. Application hex file

Shows some information about the application hex file.

4.8.3. Boot loader

Shows information about the boot loader from the last successful communication.

4.9. Output text boxes

4.9.1. Initialization

Information about application startup and initialization is shown here.

4.9.2. Parse

Information from hex file parsing is shown here.

4.9.3. Operations

Information from the operations is shown here.

4.9.4. Terminal

Terminal received text/data is shown here.

4.10. Graphical hex-file representation

This bar represents the entire device main flash memory. Other memory areas such as EEPROM, configuration bits and user id are not shown. Because the boot loader size is unknown until communication has been established the orange and red pars may be incorrect. Colors:

- Green – user application
- Orange – boot loader
- Red – colliding user application and boot loader

5. Boot loading

5.1. Console

5.2. Usage syntax

The syntax is:

```
ds30StudioConsole options
```

Option values containing spaces need to be enclosed with quotation marks, the quotation marks should surround the entire argument like this "option=value".

5.3. Options summary

When unknown option or illegal option value is detected, the operation is aborted. For more information about each command refer to the ds30 Loader main manual.

Short option name	Long option name	Description
Required		
-f=filename	--file=filename	Hex file name
-d=device	--device=devicename	Device name
-k=portname	--port=portname	Port name
-r=baudrate	--baudrate=baudrate	Baud rate
Misc		
-h	--help	Display help
-l	--debugmode	Enable debug mode
-o	--non-interactive	Start the selected operation without user interaction
-z	--list-ports	List available ports
n/a	--parse-only	Parse hex file then exit
n/a	--find	Find boot loader then exit
n/a	--less-dots	Output less progress indicating dots
Basic		
-p	--writef	Write flash
-e	--writee	Write eeprom
n/a	--readf	Reads and exports PIC flash*

n/a	--reade	Reads and exports PIC eeprom*
n/a	--read-aux --read-boot	Read the aux/boot flash
Serial		
n/a	--flowc= none/hw/sw/both	Serial flow control. Sw = Xon / Xoff
n/a	--parity=none/even odd/mark/space	Parity selection.
n/a	--stop-bits=1/2	Stop bits selection
CAN		
n/a	--pic-id=id	CAN id of device to download to*
n/a	--ds30-id=id	CAN id of the ds30 Loader application*
n/a	--ext	CAN extended frames*
n/a	--dlc=dlc	CAN transmit data length code*
n/a	--canfd	Send CAN FD frames.
n/a	--noniso	Use non iso crc.
n/a	--dbr=xxx	Data bit rate for bit rate switching.
TCP socket		
n/a	--address=address:port	Address and port nr to connect to*
Advanced		
-g	--no-goto-app	Don't relocate application reset vector
-s	--allow-bl-overwrite	Allow overwrite of boot loader
-c	--writec	Write configuration bits
n/a	--write-aux --write-boot	Writes the aux/boot flash
-v	--customplacement=x	Custom boot loader placement, pages from end
-w	--customsize=x	Custom boot loader size, page(s)
-x	--auto-baudrate	Send auto baud rate sync character
-y	--echo-verification	Verify tx echoes
n/a	--add-crc	Writes a checksum of the flash
n/a	--disable-empty-pages	Empty pages will no be written

n/a	--no-goto-bl	Don't point reset vector to boot loader
n/a	--one-way	One way communication
n/a	--hello-char	Custom hello character
Timing		
n/a	--ht=hello timeout	Time to keep sending hello before aborting [ms]
-a=time	--polltime=polltime	Poll time [ms]
-t=time	--timeout=timeout	Time before timeout [ms]
n/a	--port-open-delay=del	Delay after port is opened [ms]
Device reset		
-q=cmd	--reset-command=cmd	Reset device by specified command, this option may need to be enclosed in " under Linux, se Linux example in the next section
-u=baudrate	--reset-baudrate=br	Baud rate for reset command
-m	--reset-dtr	Reset device by dtr
-n	--reset-rts	Reset device by rts
-b=time	--resetttime=time	Resett ime [ms]
n/a	--reset-dlc=dlc	CAN DLC for reset frames*
n/a	--reset-ext	Send CAN extended frames*
n/a	--reset-pic-id=id	CAN id of device to reset*
n/a	--reset-addr=addr:port	Address and port for TCP port reset command*
Device activation		
-i	--activate-dtr	Activate device by dtr
-j	--activate-rts	Activate device by rts
Security		
n/a	--pw=password	Password to send to ds30 Secure Loader*. If no password is entered on the command line it is entered interactively with hidden characters.

* Not available in the free edition

5.4. Return value

0 is returned after a successful download, else -1.

Examples

5.4.1. Windows

```
ds30StudioConsole -f=filename.hex "-q='reset';d" -d=pic18f2550 -k=com1  
-r=115200 --writef
```

5.4.2. Linux / macOS

```
mono ds30StudioConsole.exe -f=filename.hex "-q='reset';d" -d=pic18f2550  
-k=/dev/ttyUSB0 -r=11520 --writef
```

6. Appendix A – Links

ds30 Loader website

<https://ds30loader.com>

ds30 Loader free edition website

<https://picbootloader.com>

Microsoft .NET Framework Version 3.5

<https://www.microsoft.com/sv-se/download/details.aspx?id=21>

Mono

<http://www.mono-project.com>